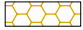
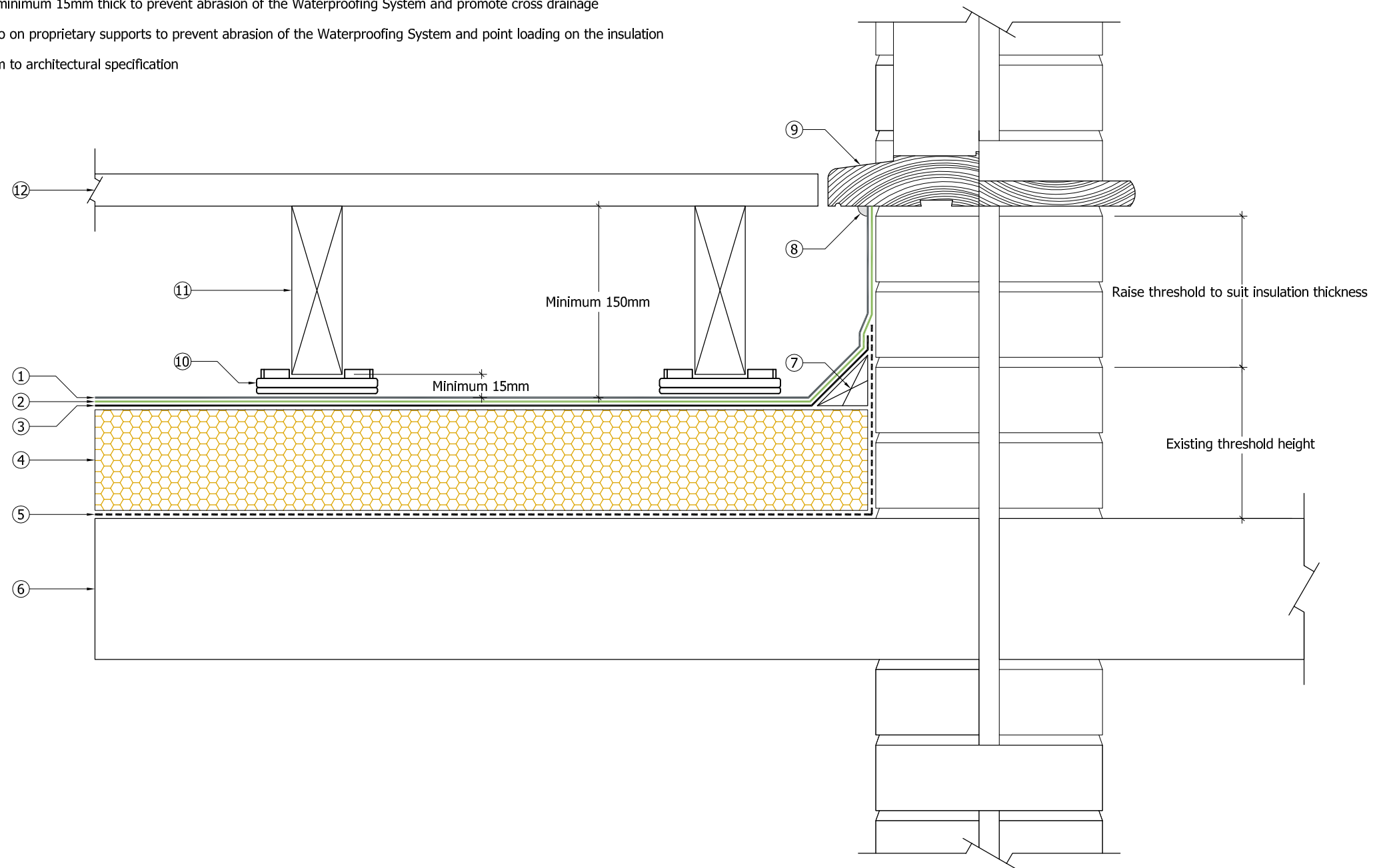


**Key**

- ① — Decaflex Top Coat applied in strict accordance with Sika Liquid Plastics Project Specification
- ② — Decaflex Embedment Coat applied at correct coverage rate for the substrate surface conditions embedded with Sika Reemat Premium GFM
- ③ — Sika Liquid Plastics Carrier Membrane SA applied in strict accordance with Sika Liquid Plastics Specification
- ④  Deco therm insulation bonded in strict accordance with Sika Liquid Plastics Project Specification
- ⑤ - - - - S-Vap 5000E SA self adhesive Vapour Control Layer [as required] applied to substrates prepared and primed with Sika Primer 600 in strict accordance with Sika Liquid Plastics Project specification
- ⑥ Existing substrate prepared in strict accordance with Sika Liquid Plastics Project Specification
- ⑦ Tanalised timber fillets [as required] and hard edges bonded with Decostik SP
- ⑧ Decaflex Waterproofing System dressed on to prepared and primed upstands, terminated tightly at the junction with the projecting sill and sealed with a continuous minimum 6mm bead of SikaHyflex-250 Facade sealant
- ⑨ Existing projecting sill detail/threshold
- ⑩ Proprietary support pads minimum 15mm thick to prevent abrasion of the Waterproofing System and promote cross drainage
- ⑪ Timber bearers installed to on proprietary supports to prevent abrasion of the Waterproofing System and point loading on the insulation
- ⑫ Proprietary decking system to architectural specification



**Sika Liquid Plastics**  
 Sika House  
 Miller Street  
 Preston  
 Lancashire PR1 1EA  
 Telephone: 01772 259781  
 Email: [technical.customer.services@uk.sika.com](mailto:technical.customer.services@uk.sika.com)  
[www.liquidplastics.co.uk](http://www.liquidplastics.co.uk)

This drawing is solely intended to illustrate the correct application of Sika Liquid Plastics products and systems. It must be read in conjunction with the appropriate specification and current issue of relevant Product Data Sheets. All elements bearing reference to structural and/or thermal design are shown indicatively and **should not** be used in whole or in part for any aspect of project design without consulting the relevant authorities.

For refurbishment projects, all aspects of the existing roof are deemed to be fully compliant with BS 6229:2003 (Code of Practice for Flat Roofs with Continuously Supported Coverings) or improved upon for instances where these standards are not met.

Site-specific details not covered by our standard range can be obtained by providing relevant information to the email address shown.

Project N <sup>o</sup>	
DWG N <sup>o</sup>	Revision

Project:

Drawing Title:  
 Built Up Roof typical arrangement showing proprietary timber decking system to typical raised threshold

Scale: NTS @ A3      Drawn:

Date:

